



NORTH, EAST & WEST KERRY DEVELOPMENT



# NEWKD Impact Report 2022

COMMUNITY-LED LOCAL DEVELOPMENT





NORTH, EAST &amp; WEST KERRY DEVELOPMENT

NEWKD's vision is an improved quality of life for all of the people in our area, by implementing our mission of developing and delivering actions based on their needs, with our core values being: serving the people; valuing the work of the community and voluntary sector; using a community development approach; and building and maintaining relationships underpinned by mutual respect, fairness and dignity.

- One of 49 local development companies throughout the country that deliver community-led local development in partnership with all relevant stakeholders.
- Not-for-profit company limited by guarantee (CLG), and a registered charity.
- Delivering social inclusion, rural and community development since our establishment in 2009 (predecessor companies since mid-1990s).
- Voluntary board and professional staff have up to 30 years' experience and expertise responding to local needs and opportunities.
- Since 2009 has contributed €50m to the economy of our area, employing more than 300 people.
- While largely funded by public funds, NEWKD also relies on contributions from businesses, communities, and individuals in order to more fully respond to local needs and opportunities.
- Established many projects over the years that are now self-sufficient (e.g. rural transport, volunteering, food poverty, etc.).


[www.newkd.ie](http://www.newkd.ie)



# Contents

# Page Number

Chairperson's Address	4
CEO Statement	5
Financial Statement	6
Governance	8 - 10
NEWKD Impact 2022	11

PROGRAMMES:	NEWKD STRATEGIC AREAS				
	ENTERPRISE & RURAL TOURISM	EMPLOYMENT	SOCIAL SUPPORTS	COMMUNITY, RURAL DEVELOPMENT & ENVIRONMENT	
Social Inclusion and Community Activation Programme	✓	✓	✓	✓	13
LEADER Rural Development Programme	✓			✓	14
TÚS Community Work Placement Programme		✓		✓	14
Community Employment Tralee		✓		✓	14
Rural Social Scheme	✓		✓	✓	15
TEAM Community Employment Scheme		✓	✓		16
Older Persons Home Maintenance Community Services Programme	✓	✓	✓		17
Sustainable Energy Communities				✓	18
Revamp Furniture Upcycling Community Services Programme	✓	✓		✓	18
Tralee Sports Hub			✓	✓	18
Home Visitation Service Programme			✓		19
Rural Food Skills Net	✓	✓			21
SEMI Project - Social Enterprise for Migrant Integration	✓	✓			21
Kingdom Trust Fund			✓	✓	21
Moving On Project, Programme for Employability, Inclusion and Learning (PEIL)		✓	✓		22
Senior Alert Scheme			✓		22
Tralee Local Employment Scheme			✓		23
Listowel Jobs Club			✓		23
Kerry Local Area Employment Service		✓			23

APPENDIX 1	24
APPENDIX 2	30



## Chairperson Address

As outgoing Chairperson of NEWKD, it has been a pleasure to work with the Board and staff of NEWKD over the past 8 years. A lot of change has happened over those years and some of the highlights that I have had the privilege of presiding over include the following:

- The acquisition and operation of 2 fine premises in Listowel and Castleisland, which has reduced our cost base, and enhanced our integrated offering of community-led local development supports and services to the public;
- The increase in our budget levels overall from €3.3m to over €5.0m in the current reporting year, despite cuts in some programmes such as LEADER;
- The positive responses of our organisation - in collaboration with other community / voluntary, private and public sector partners - to events in recent years especially the restrictions during the Covid situation and the influx of refugees from Ukraine.
- The approval for and recruitment of our Rural Recreation Officer, who is now delivering on the Walks Scheme in Glenageenty, Dingle Way and the North Kerry Way.
- Also, we initiated an excellent LEADER Co-operation Project in North Kerry and West Limerick (with WLR), that will point ways for the region as a whole, and individual parishes, to focus on improving their own situation over the next decade or so.

It is important also to note some examples of the impressive work and changes that occurred during 2022, including:

- The successful application as lead organisation to deliver the Kerry Local Area Employment Service (KLAES) - in collaboration with SKDP - which replaced the Local Employment Services and Jobs Clubs, that had served the people of Co. Kerry very well for almost 30 years.
- The successful transfer of our 3 Community Services Programmes to a new model that hopefully is more financially sustainable.
- The launch of the Beauty in the Bog project, that was initiated by our Farm Families Committee, delivering a lovely booklet celebrating our natural heritage.

In conclusion, I would like to thank all Board members - both past and present - who have supported me and have given a real positive contribution to the organisation and the area over many years. To the management and staff of NEWKD I would also say thank you for the massive role you play in empowering people and communities.

All the very best,

*John Stack*

**John Stack**  
**Chairperson (2015-2023)**



## CEO Statement

As CEO of NEWKD, it is a great privilege to report on the impressive work that has been achieved through the dedication of both volunteers and staff during 2022.

In recent times there have been and are ongoing changes to the lives of people living in our communities and NEWKD has succeeded in continuing to deliver professional services relevant to people's quality of life. NEWKD continues to face our own challenges in the reduction of funding in some programmes, while the demands in relation to governance and compliance are increasing. However, we are confident in our commitment and ability to continue delivering the highest quality of services to the communities that we serve.

During 2022 our dedicated staff have worked with and supported a significant number of people in the area in different ways, enabled through a suite of 21 programmes focused on social, employment and enterprise development. Through the Employment Services Strategy 5,076 people were assisted, with a broad range of progression routes including employment, personal development, work scheme placement, and training and education.

Through our Social Supports Strategy 10,897 people availed of services and supports that NEWKD facilitated, including youth and family, mental health supports, drugs and alcohol rehabilitation, and home visitation and maintenance work.

Under the Community Environment and Rural Development Strategy our organisation worked with and supported 638 Community Groups. Capital, marketing and training supports - both financial and otherwise - have been provided to these voluntary bodies throughout our area, including community and social enterprises, maintenance of facilities in the community, older people's groups and networks, Men's Sheds, Women's groups, youth activities, recreational facilities, etc.

Finally, under our Enterprise and Rural Tourism strategy, 468 new and established enterprises were supported. Private enterprise is the life-blood of our local economy and the supports given included capital grants for machinery and equipment, training supports for management and staff, and feasibility studies for business and industry ideas.

I would like to say a sincere thank you to all involved at any level in NEWKD. We have come through a period of great change and thanks to all for staying the course and coming out better for the challenges ahead. I would like to quote an extract from Ralph Waldo Emerson as I feel it reflects the role of NEWKD as a development company: 'Do not go where the path may lead; go instead where there is no path and leave a trail ... that others may follow!'

Finally, I would like to pay tribute to our outgoing Chairperson John Stack, who has represented the IFA on our board since 2015 and was a real leader of the organisation, a supporter of our work and an advocate for people and communities. I also thank Lucia Power as Company Secretary, Bridget Fitzgerald, Kerry County Council and Breda Flaherty, IBEC for their valuable contributions to the organisation over many years.

Go raibh mile maith agaibh go léir!

*Eamonn O'Reilly*

**Eamonn O'Reilly**  
CEO

# Financial Statement

DIRECTORS REPORT FOR THE FINANCIAL YEAR ENDED 31 DECEMBER 2022 (EXTRACT)

## Principal Activity and Review of the Business

NEWKD is managed by a voluntary board and the principal objective of the company is to promote, support, assist and engage in:

- a) Social development;
- b) Enterprise development to facilitate rural and urban regeneration; and
- c) Community development designed to benefit and promote the welfare of local communities and to deal with the causes and consequences of social and economic disadvantage or poverty.

The Company is limited by guarantee not having a share capital and has charitable status.

The most significant additional issue our organisation had to contend with in 2022 was responding to the increased immigration of refugees especially from Ukraine, while also adapting to the lifting of Covid-related restrictions, to ensure that staff and volunteers were supported to work with an increasing number and diversity of individuals, communities and businesses that need our services. In responding to both issues, as well as the continuing difficulties faced by many in our communities, NEWKD board, staff and volunteers have shown significant flexibility in adapting to both ever-present and ever-changing needs and opportunities, especially in the manner in which we work in partnership with all sectors of the wider community-voluntary, the private and the statutory.

## Principal Risks and Uncertainties

The directors had appraised the main risks associated with Covid-19 in our 2020 annual financial statement, and while seeing an initial slowdown in trading activity during the period of temporary closures, this recovered in 2021 such that deficits incurred in the previous year were matched by surpluses in the current reporting year. While another risk was a prolonged period of government recommendations and restrictions on the movement of people to contain the virus, our services adapted to deliver more online services. Our board and staff are to be commended for their proactivity and positivity in dealing with this unprecedented situation so competently.

## Financial Results

While the financial results in these statements report that approximately €5.5m went through our accounts, our overall development activity generated additional funds through RSS and Tús (€2.4m administered by Pobal per Note 8 below) and LEADER grants (€2.0m administered by KCC), demonstrating that NEWKD directly contributed a total of almost €10.0m to the local economy.

## Future Developments

The directors are not expecting to make any significant changes in the nature of the business in the near future. Funding has been secured for the foreseeable future and employees are kept as fully informed as practicable about developments within the business. However, LEADER - one of our pillar programmes - is threatened with a reduction in funding of approximately one-third, and the directors will continue to explore ways that our area does not suffer from regional disparities in support and development.

**INCOME & EXPENDITURE STATEMENT FOR THE FINANCIAL YEAR ENDED 31 DECEMBER 2022**

	€ 2022	€ 2021
<b>INCOME</b>		
Pobal Funding	346,245	335,222
Department of the Community & Rural Development	779,607	794,007
Department of Employment Affairs & Social Protection	1,594,765	1,646,487
Other Income & Funding	527,059	370,851
Kerry County Council	2,131,685	1,730,930
Department of Justice & Equality	152,110	171,003
<b>Total Income</b>	<b>5,531,471</b>	<b>5,048,500</b>
<b>EXPENDITURE</b>	<b>(5,378,787)</b>	<b>(4,931,435)</b>
Surplus before Interest	152,684	117,065
Interest Payable and Similar Expenses	(13,129)	(11,350)
<b>Surplus for the Financial Year</b>	<b>139,555</b>	<b>105,715</b>

**BALANCE SHEET FOR THE FINANCIAL YEAR ENDING 31 DECEMBER 2022**

<b>NON-CURRENT ASSETS</b>		
Property, plant and equipment	743,009	450,071
Financial assets	100	100
	<b>743,109</b>	<b>450,171</b>
<b>CURRENT ASSETS</b>		
Debtors	336,031	275,204
Cash and cash equivalents	945,705	705,791
	<b>1,281,736</b>	<b>980,995</b>
<b>Creditors: Amounts falling due within one year</b>	<b>(1,256,092)</b>	<b>(981,984)</b>
<b>Net Current Assets/(Liabilities)</b>	<b>25,644</b>	<b>(989)</b>
<b>Total Assets less Current Liabilities</b>	<b>768,753</b>	<b>449,182</b>
<b>CREDITORS</b>		
Amounts falling due after more than one year	(362,001)	(181,985)
<b>Net Assets</b>	<b>406,752</b>	<b>267,197</b>



# Governance

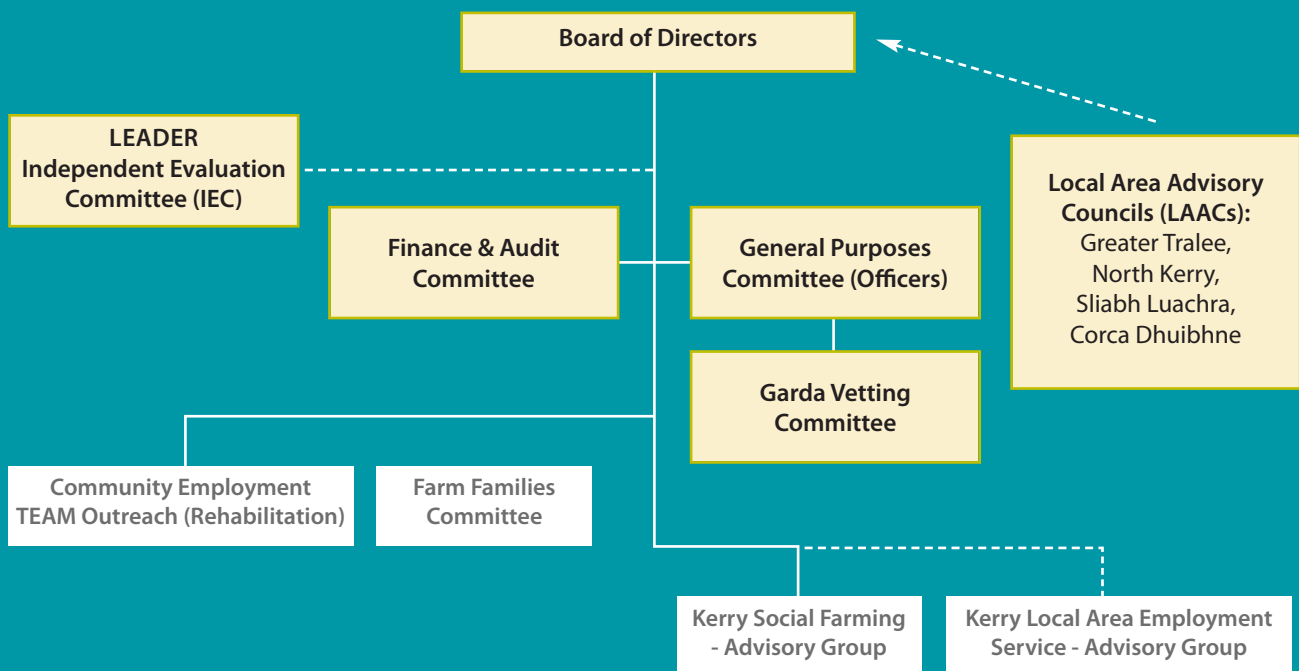
North, East and West Kerry Development (NEWKD) strives to meet the best governance standards driven by the principles of transparency, openness and accountability.

NEWKD is a company limited by guarantee with charitable status. The Board of Directors are the ultimate decision-making body within the organisation. The Board includes representatives from the community and voluntary sector, public representatives, social partners and statutory agencies to devise and implement solutions to social exclusion and local development needs in the North, East and West of County Kerry.

In addition to an annual independent financial audit, NEWKD is subject to internal audits by each funder. The Board have adopted the 6 Principles of the Charities Governance Code.

NEWKD is a charitable company with a registered office at Aras an Phobal, Deans Lane, Tralee, Co. Kerry, NEWKD's Authorised Company Number is 454570.

NEWKD has been granted Charitable Status, Charity No. CHY 18448 and is registered with the Charities Regulatory Authority, RCN 20070717.







NEWKD Board of Directors 2023

## NEWKD Board of Directors

### Community and Voluntary Sector

**Lucia Power (Company Secretary)** Sliabh Luachra Local Area Advisory Council (Castleisland Area)

**John O'Sullivan (Vice Chairperson)** Tralee Local Area Advisory Council

**Patrick O'Shea (Treasurer)** Corca Dhuibhne Local Area Advisory Council (Dingle Area)

**Breda Keane** Sliabh Luachra Local Area Advisory Council (Castleisland Area)

**Sean Lyons** Tralee Local Area Advisory Council

**Sean McCarthy** North Kerry Local Area Advisory Council (Listowel Area)

**Noel Lynch** North Kerry Local Area Advisory Council (Listowel Area)

**Gearóid O'Shea** Corca Dhuibhne Local Area Advisory Council (Dingle Area)

### National Social Partners Sector

**John Stack (Chairperson)** Irish Farmers Association (IFA)

**David Diggins** Irish Creamery Milk Suppliers Association / Irish Co-Operative Organisation Society (ICMSA/ICOS)

**Suzanna Griffin** Irish Congress of Trade Unions (ICTU/SIPTU)

**Niamh Kelly** Irish Business & Employers Confederation (IBEC)

### Statutory Sector

**Claire McAuliffe** Teagasc

**Kevin Fay** Kerry Education and Training Board (KETB)

**Una Moynihan** Munster Technology University (MTU)

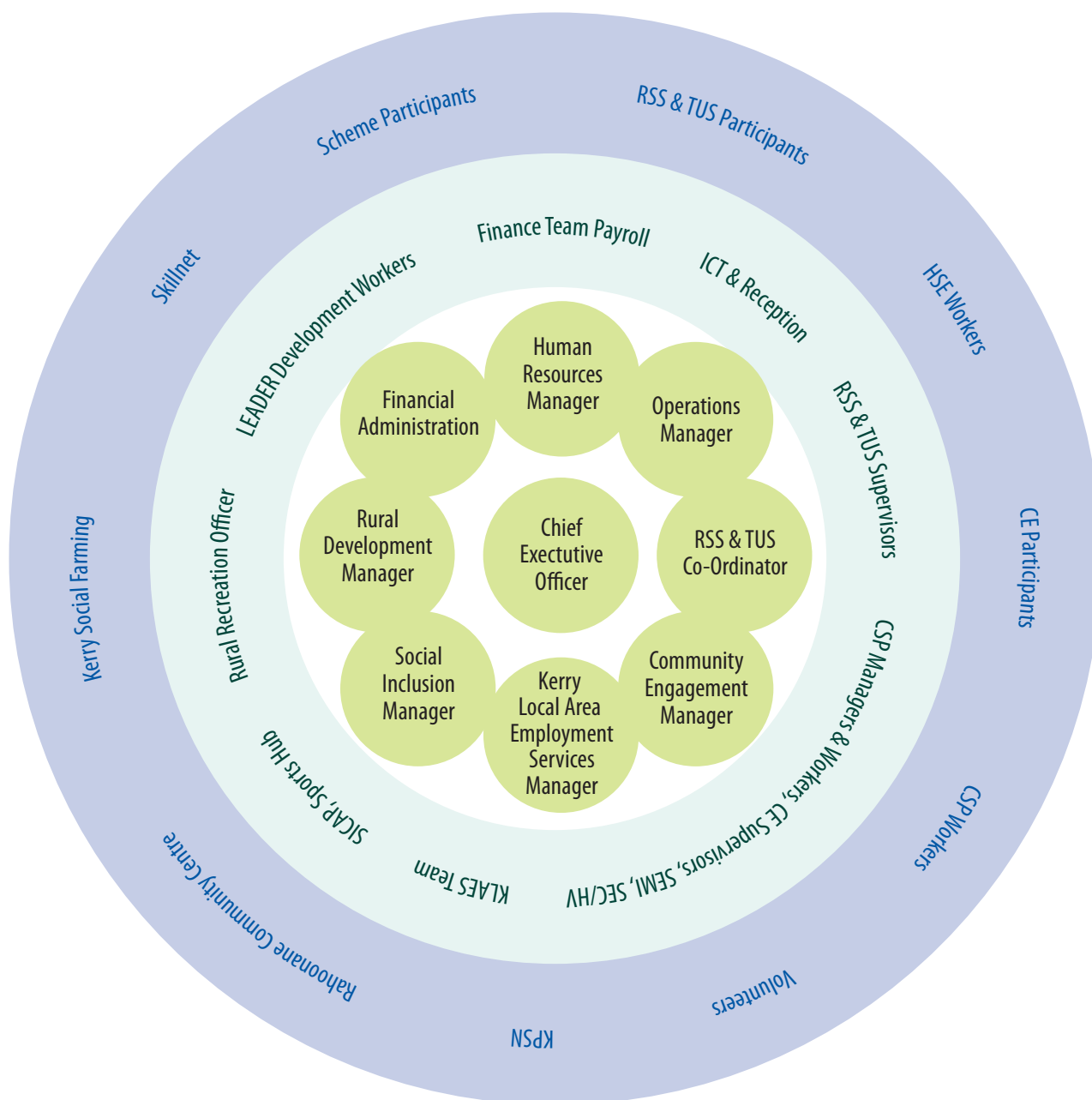
### Local Government Sector

**Councillor Michael Kennelly** Kerry County Council - Elected Member

**Councillor Michael Sheehy** Kerry County Council - Elected Member

**Liam Quinlan** Kerry County Council - Executive

# NEWKD Staff Structure



# NEWKD Impact 2022

10,897



## Individuals

*(family, parenting, education, training, employment, social supports, social farming, referrals, etc.)*

468



## Businesses

*(including €3.5m in past 7 years in start-up grants for tourism, services, food enterprises, rural tourism, etc.)*

5,076



## Employment Support Services

638



## Community Groups

*in every parish in our area  
(including €3m grants in last 7 years for community centres, recreational facilities including all-weather, estate enhancements, etc.)*





*Clockwise from top left: Coast Road Cafe, Ballyduff FRC, Áras Mhuire Nursing Home, Castleisland Community Garden Project, Moving On Project.*

# NEWKD Programmes Delivered 2022

## Social Inclusion and Community Activation Programme

The Social Inclusion and Community Activation Programme (SICAP) 2018-2022 provides funding to tackle poverty and social exclusion through local engagement and partnerships between disadvantaged individuals, community organisations and public sector agencies.

Administered by Pobal and funded by the Irish Government through the Department of Rural and Community Development, it also receives funding from the European Social Fund under the Programme for Employability, Inclusion and Learning (PEIL) 2018-2022.

SICAP addresses high and persistent levels of deprivation through targeted and innovative, locally-led approaches. It supports disadvantaged communities and individuals including unemployed people, people living in deprived areas, people with disabilities, single parent families, people on a low income, members of the Traveller and Roma community and other disadvantaged groups.

### KEY ACHIEVEMENTS

- 605 SICAP Registered Individuals
- 64 Community and Voluntary Groups Supported
- 25 Community Initiatives Delivered, e.g. SMART Villages
- 50 Self Employments Supports
- 12 Social Enterprises Supported

### PROGRAMME GOAL 1

*To support communities and target groups to engage with relevant stakeholders in identifying and addressing social exclusion and equality issues, developing the capacity of Local Community Groups, and creating more sustainable communities.*

- Initiatives for people with Substance Misuse Problems	1,250.00
- Working with Disadvantaged Women	7,250.00
- Equality Supports	1,766.31
- Enhance Just Transition Projects	3,250.00
- Support for Community Planning	2,500.00
- Enhancing life for Older People	750.00
<b>Total under Goal 1</b>	<b>€16,766.31</b>

### PROGRAMME GOAL 2

*To support disadvantaged individuals to improve the quality of their lives through the provision of life long learning and labour market supports.*

- Support Integration of Ukrainian People	31,256.25
- Mental Health and Well-being Collaborations	15,000.00
- New Communities and Roma Initiatives	7,000.00
- Supporting Families and Education	21,000.00
- Life Long Learning - Improving Knowledge, Skills and Competencies of Adults	4,900.00
- Engaging with Disadvantaged Young People	15,000.00
- Supporting Enterprise Development	9,250.00
- Supporting People to Engage in the Labour Market	1,526.00
<b>Total under Goal 2</b>	<b>€104,932.25</b>

## LEADER (Rural Development Programme)

The aim of the LEADER Programme (2014-2022) is to improve the quality of life of the people and to diversify the rural economy of North, East and West Kerry. The measures supported under the programme include:

- Rural Tourism
- Enterprise Development
- Rural Towns and Villages
- Basic Services to Communities
- Rural Youth
- Rural Environment
- Food Initiatives

### KEY ACHIEVEMENTS

- Total investment €6,512,371
- *For full list of Leader projects please see page 24.*

## Tús Community Work Placement Programme

### PROGRAMME AIM

The programme aim is to provide short-term quality and suitable working opportunities, for those who are unemployed and on the Live Register for 12+ months, while at the same time carrying out beneficial work within communities in both urban and rural areas. There are 7,500 placements nationally with NEWKD securing 120 placements for the North & East of the County. Tús is a work placement initiative for both rural and urban areas.

### KEY ACHIEVEMENTS

- 120 participants supported to participate in labour market programmes
- 40 Community and Voluntary Groups supported

## Community Employment Tralee

CE is an employment and training programme, which helps long-term unemployed people to return to the workforce by breaking their experience of unemployment through a return to work routine. The programme assists them to enhance and develop both their technical and personal skills which can then be used in the workplace. The CE programme is sponsored by groups who want to benefit the local community, namely community and voluntary bodies involved in not-for-profit activities.

The NEWKD Community Employment scheme is based in the Tralee area and currently has approximately 25 participants filling a variety of roles such as administration, accounts, office support, reception, information provision, research, caretaking, childcare and maintenance of sporting facilities

### KEY ACHIEVEMENTS

- 25 participants
- 14 Community and Voluntary Groups supported





## Rural Social Scheme

### PROGRAMME AIM

To provide income support for farmers and fishermen in Ireland who are receipt of long-term social welfare payments. In return, those participating in the scheme will provide certain services that benefit rural communities including:

- Maintaining and enhancing various walking routes (that is, way marked ways, agreed walks) and bog roads.
- Energy conservation work for older people and those at risk of poverty.
- Village and countryside enhancement projects.
- Social care and care of older people, community care for both pre-school and after-school groups.
- Environmental maintenance work: maintenance and care-taking of community and sporting facilities.
- Projects relating to not-for-profit cultural and heritage centres.
- Community administration or clerical work.

### KEY ACHIEVEMENTS

- 95 individuals supported
- 72 Community and Voluntary Groups supported

## TEAM Community Employment Scheme

The Team Project gives people who are in recovery from addiction a safe space to find out what they want to do next. Often people in addiction have chaos in their lives. TEAM is a calm environment in which every person is nurtured while they grow roots to anchor themselves in life.

The aims of the scheme are individualised depending on the future goals of the participant. The main aim is to improve the participants' life by:

- Encouraging health and well-being.
- Supplying access to training and education.
- Sourcing relevant work placements and work experience.
- Supporting progression to further education and/or employment.

The group participants are referred to by HSE, Coolmine and The Grove. Each participant has an individual learning plan to aid them on their recovery journey and lead them to further education, training, employment and community participation.

### KEY ACHIEVEMENTS

- 32 total participants
- 12 participants have exited the scheme
- 9 into employment, 3 into other training programmes
- 53 training and education programmes completed

**This Art Piece was created by the Team Project in Tralee, and it represents the journey and growth of the participants in their recovery and development.**



*The Tree represents the TEAM PROJECT and the butterflies, ladybirds, cat, the cocoon, the dove and the moth are the participants feeding off the tree, all at various levels but still depending on the tree whilst continuing to grow together. The puzzles on the plant pot are the various pieces each participant had to complete to get to their current level. The strength of The Serenity Prayer is the ethnic of their journey and is their strength in being capable of continuing their journey. In total this piece shows that through self-belief and being part of a team, they can flourish.*





## Older Persons Home Maintenance Community Services Programme

NEWKD/North Kerry Home Maintenance Service employs a maintenance team to provide a low cost maintenance and minor repair service in the North Kerry area. Our team of workers are:

- Based in designated areas of North Kerry. This ensures that all workers are locally known and trusted by the community.
- Trained in Manual Handling, First Aid, Health & Safety and Chemical & Outdoor Maintenance Training and are Trained First Responders also.
- Garda vetted.
- Friendly, trustworthy, reliable and offer a confidential service.
- Informed of other services in the area to signpost clients when necessary.

### KEY ACHIEVEMENTS

- 1,000 individual home maintenance support services provided





## Sustainable Energy Communities (SEC)

The Sustainable Energy Communities (SEC) Programme is a nationwide initiative which aims to support Ireland's transition to a more energy efficient, sustainable future. NEWKD in partnership with Ballyhoura Development supports communities across the North Kerry area to participate in the Sustainable Energy Communities (SECs) Network, a network of almost 600 groups working to improve their communities.

A Sustainable Energy Community is any group of people who come together to improve how energy is used for the benefit of their community. They look at how we can use energy in a sustainable, holistic way. A SEC can include a range of different energy users in the community such as homeowners, sports clubs, community centres, local businesses and churches. In this way, a SEC connects sustainable energy, local economic development and public wellbeing. Communities are provided with mentoring and technical support at every stage, so there is no need for communities to have any prior energy knowledge or experience.

### KEY ACHIEVEMENTS

- 13 Energy Community Groups supported

## Revamp Furniture Upcycling Community Services Programme

Established in 2010, newly located in our Castleisland Office (former Bank in Main St, Castleisland). Revamp both a circular economy intervention and integrated employment social enterprise. Revamps goal is to create a Kerry brand that is recognised as a leading provider of furniture recycling. To achieve this goal we deliver our services to the highest quality service standard. We work hard to provide a quality service to households and partners including Kerry County Council to recycle unwanted bulky waste rather than send it to the landfill. Our showroom is open Monday to Friday where you will receive a warm welcome from our staff, we believe if you are a happy customer, you will be a loyal customer and will talk about your positive experience with us. We know that offering you the best service in the business is good business. We know that our success depends on your satisfaction. We care about the environment and push towards a greener service.

### KEY ACHIEVEMENTS

- 1900 individuals supports
- 10 Community and Voluntary groups supported

## Tralee Sports Hub

Tralee Sports Hub is an initiative of a partnership between NEWKD, Kerry Recreation and Sports Partnership and Sports Ireland. Based at Rahonanne Community Centre, the Sports Hub is delivered on an outreach basis.

### KEY ACHIEVEMENTS

- 33 community initiatives delivered
- Types of initiatives:
  - HomeWork Club
  - Women Empowerment Fitness Class
  - Bounce Fitness
  - Movement through Yoga
  - Healthy Food Made Easy
  - Bike workshops, Safety and Learning to Cycle
  - Childrens Activity Programmes
  - Social International Soccer
- 168 adults participated
- 169 young people participated

## Home Visitation Service Programme

Set up 2021 in response to the need identified by the Rural Social Scheme and the HSE to provide free social visiting service for people over 60 years in the North Kerry Area in particular Moyvane, Listowel, Ballydonoghue, Duagh, Causeway, Ballyduff, Tarbert, Ballybunion, Asdee, Ballylongford.

NEWKD/RSS offers once a week visitation for social purposes, to support an older person and to link them to other existing community services in the area. It is to give the older person time to chat and have contact with dedicated pair of RSS/volunteers who are there to listen and engage with them on regular basis.

### KEY ACHIEVEMENTS

- 15 registered clients
- 8 volunteers
- 3 community initiatives, e.g. Connection Days held locally

*Home Visitation Service  
booklet produced in association  
with NEWKD*









## Rural Food Skillnet

Rural Food Skillnet supports the growth of Ireland's food and hospitality sector, by enhancing specialised skills and knowledge, broadening access to skills development opportunities and encouraging ongoing professional development.

We focus primarily on supporting those in employment within the sector. To meet the needs of member companies, we also offer a number of fully-funded programmes for jobseekers, subject to eligibility criteria.

The benefits of your company joining Rural Food Skillnet:

- Assist businesses to identify and address their skills needs
- Information regarding successful approaches to learning and talent development
- Flexible training programmes tailored to the needs of the sector
- Access to a network of businesses within the sector
- Conferences, seminars, and other informal learning and networking events

### KEY ACHIEVEMENTS

- 115 businesses supported
- 460 individuals who undertook employment based training

## SEMI Project - Social Enterprise for Migrant Integration

The SEMI Project is a programme that helps migrants, especially refugees and asylum seekers, get to know their local community, and which allows the local community to get to know them. It includes:

- Flexible work experience placements with community based social enterprises
- Personal development skills training
- Employment skills mentoring

### KEY ACHIEVEMENTS

- 50 Individuals supported
- 10 training initiatives delivered

## Kingdom Trust Fund

The Kingdom Education Trust Fund is delivered by NEWKD to support access to third and further level education. The fund is allocated in the form of scholarships to students who may not be in a position to continue their education because of financial difficulties. An application process applies annually.

### KEY ACHIEVEMENTS

- 25 students received funding support to continue in their third and further level education



## **Moving On Project** Programme for Employability, Inclusion and Learning (PEIL)

Moving On is an innovative employment programme for women in Kerry, matching women who are looking for work with employers looking for staff. Moving On offers women free training, support and links with employers. It also gives women the opportunity to update their digital and remote working skills.

### KEY ACHIEVEMENTS

- 6 years of successful delivery
- 260 women participated

## **Senior Alert Scheme**

The Seniors Alert Scheme is to enable older persons to continue to live securely in their homes with confidence, independence and peace of mind by providing them with a free personal monitored alarm. People over 65 get a free personal alarm or pendant. The alarm can be worn as a pendant or around the wrist like a watch. When pressed it connects wirelessly to a base unit, usually attached to a phone. The base unit immediately sends a call to a 24 hour monitoring centre.

### KEY ACHIEVEMENTS

- 900 Individual alarms fitted to date

*"Having the Seniors Alert Alarm gives me great piece of mind. I know that if I have a fall or need help with anything, assistance is just a press of a button away."*

**Mary Enright, Listowel**

*"Sometimes older people can feel vulnerable or isolated particularly if they are living alone. We've found that the Seniors Alert Scheme gives them great reassurance and comfort. It helps them to feel protected and secure."*

**Dympna O'Carroll, NEWKD**

## Tralee Local Employment Scheme

Tralee LES delivered an extensive range of service to clients in order for them to find suitable employment. The range of services include confidential one to one's which help in exploring client skills and abilities.

The LES helps set realistic career plans of action for employment, training or education and provide support and advice to assist client to make decisions for progression to employment. Individuals can also get help with CV's, completing application forms, preparing for interview, etc. LES provide a confidential and professional recruitment service for employers and can also tailor training to employer needs.

### KEY ACHIEVEMENTS

- 742 individuals supported in seeking employment
- 8,900 interventions delivered

## Listowel Jobs Club

NEWKD delivered a Jobs Club in Listowel under the Department of Employment Affairs and Social Protection and a Jobs Club in Castleisland under the Social Inclusion Community Activation Programme. Jobs Clubs are designed to help jobseekers get a job. Range of supports delivered included:

- Providing one-on-one support
- Cover letter, applications and CV preparation
- Interview skills
- Future planning

### KEY ACHIEVEMENTS

- 130 individuals to received job seeking support
- 1,400 interventions delivered

## Kerry Local Area Employment Service

Kerry Local Area Employment Service (KLAES) commenced delivery in 2022. It's establishment combined the Listowel Jobs Club, Tralee Local Employment Service and the South Kerry Development Employment Service. The newly formed KLAES is a county-wide service, committed to providing intensive and tailored Employment Assistance and advice supports to our clients, employers and stakeholders. KLAES is delivered under contract for INTREO/Department of Social Protection.

### KEY ACHIEVEMENTS

- 1,060 clients
- KLAES is delivered in communities throughout the County in 8 locations

# APPENDIX 1 |

PROJECT NAME	PROMOTER NAME	LEADER GRANT AMOUNT
1. 'Women Active in Society' Training Programme	NEWKD	€199,415.00
2. Abbeydorney Community Playground Development Committee	Abbeydorney Community Playground Development Committee	€96,996.00
3. Adapt Kerry - Feasibility Study on the Development of Services and Facilities at ADAPT Womens Refuge	ADAPT Kerry CLG	€10,516.00
4. AK Inspired CLG - Inspired Ability Campus	AK Inspired CLG	€21,729.65
5. An Ríocht Archery Club - Ancient Archery with An Ríocht	An Ríocht Archery Club	€13,086.15
6. Andrew Cross - Amazing Kerry	Andrew Cross	€19,006.87
7. Ardfert Community Council CLG - An Fearann Community Development, Ardfert	Ardfert Community Council CLG	€76,612.50
8. Ardfert Community Council CLG - Astroturf Lights	Ardfert Community Council CLG	€40,672.72
9. Ardfert Community Council CLG - Feasibility Study for a Community Sports Complex in Ardfert	Ardfert Community Council CLG	€14,081.04
10. Asdee Community Development Association - Feasibility Study into Development of Community Centre	Asdee Community Development Association	€14,701.50
11. Austin Quilter Fruity Farm - Fruit with Yogurt and Ice Cream	Austin Quilter	€24,732.42
12. Austin Stacks Hurling & Football Club - Connolly Park Community Halls Upgrade	Austin Stacks Hurling & Football Club	€35,892.00
13. Ballybunion Community Centre - Upgrades	Ballybunion Community Centre	€11,123.25
14. Ballybunion Community Forum CLG - Study of the Habitat of the Chough in the Ballybunion Area	Ballybunion Community Forum CLG	€8,856.00
15. Ballybunion Community Forum CLG - A Geo-Physical study of the Castle Green area in Ballybunion	Ballybunion Community Forum CLG	€8,468.55
16. Ballybunion Community Forum CLG - Ballybunion Wellness Workshops	Ballybunion Community Forum CLG	€8,075.00
17. Ballybunion Community Forum Clg - Moya Festival Workshops	Ballybunion Community Forum CLG	€6,250.00
18. Ballybunion Community Forum Ltd - Tourism Marketing Strategy	Ballybunion Community Forum CLG	€9,633.60
19. Ballybunion Health & Leisure Centre - Indoor Wet Area - Feasibility Study	Bevely Ltd	€5,887.50
20. Ballybunion Tidy Towns - Main Street Tree Boxes	Ballybunion Tidy Towns	€7,012.67
21. Ballydonoghue Bardic Festival Committee - Ballydonoghue Bardic Festival	Ballydonoghue Bardic Festival Committee	€1,861.20
22. Ballyduff Ballwall Committee - Ballyduff Ballwall and Multi-Use Games Area	Ballyduff Ballwall Committee	€41,054.97
23. Ballyduff GAA Club - Installation of Community Walkway with LED Floodlighting with Pitch Side Fencing	Ballyduff GAA Club	€54,500.00
24. Ballyheigue Biodiversity Group - Reviving Ballyheigue	Ballyheigue Biodiversity Group	€9,132.75
25. Ballylongford Enterprise Association - Ballylongford Oyster Festival	Ballylongford Enterprise Association	€4,503.75
26. Ballylongford Enterprise Association - Community Development-Purchase of a Ride on Lawn Mower	Ballylongford Enterprise Association	€5,700.00
27. Ballylongford Enterprise Association - Lift	Ballylongford Enterprise Association	€18,387.00
28. Ballylongford Playground Development Committee - Ballylongford Playground	Ballylongford Playground Development Committee	€97,529.92
29. Ballylongford Tidy Towns - 3 Year Plan	Ballylongford Tidy Towns	€2,700.00
30. Ballymac-Glanageenty Ramblers - Upgrading Surface on Glanageenty Walkway	Ballymac-Glanageenty Ramblers	€8,475.00
31. Ballymac-Glanageenty Ramblers - Bernard Brothers Loop Walk Fencing	Ballymac-Glanageenty Ramblers	€3,328.38
32. Ballymac-Glanageenty Ramblers - Glanageenty Walkways	Ballymac-Glanageenty Ramblers	€8,971.31
33. Banna Rescue- Capsize & Personal Survival Techniques Training	Banna Community Rescue Boats Ireland (Banna Rescue)	€3,295.00
34. Bill Maguire - High Performance Coaching Centre	Bill Maguire	€23,585.00
35. Blennerville Derrymore Community First Responders - Purchase of Equipment	Blennerville, Derrymore Community First Responders	€2,460.00



36.	Blennerville Tiny House Glamping	Seán de Buitlear	€90,000.00
37.	Blennerville Windmill Company LTD - Feasibility Study	Blennerville Windmill Company Ltd	€11,128.50
38.	Blennerville, Derrymore Community First Responders - Delivery and Purchase of Training Equipment	Blennerville, Derrymore Community First Responders	€2,300.00
39.	Brandon Rowing Club - Curragh Repairs and Trailer for Brandon Rowing Club	Brandon Rowing Club	€4,500.00
40.	Brendan McCarthy - Publication of Fr William Ferris's History of the Parishes	Brendan McCarthy	€3,257.60
41.	Brona Chocolates - Cafe/Visitor Experience	Brona Chocolate	€15,750.00
42.	Camp Community Council Ltd - Renewable Energy Project at Camp Community Hall	Camp Community Council Ltd	€61,290.00
43.	Camp Community Council Ltd - Upgrade of Camp Community Centre	Camp Community Council Ltd	€74,973.84
44.	Camp Community Council Ltd-Upgrade of Camp Community Centre	Camp Community Council Ltd	€62,085.00
45.	Caroline O'Connor, Dingle Chocolates Purchase of Equipment	Caroline O'Connor	€28,515.78
46.	Castlegregory Community Council - Castlegregory ECO Park	Castlegregory Community Council	€2,340.00
47.	Castlegregory Community Council - Castlegregory Playground	Castlegregory Community Council	€146,250.00
48.	Castlegregory Community Council - Energy Upgrade and Refurbishment of Community Rooms	Castlegregory Community Council	€149,138.25
49.	Castlegregory Golf Club - Game On Autism Golf Programme Training	Castlegregory Golf and Fishing Club	€12,820.00
50.	Castlegregory Golf Club - Game On Autism Golf Programme	Castlegregory Golf and Fishing Club	€19,192.53
51.	Castleisland AFC - Erection of Fencing and Lighting around All Weather Artificial Turf Playing Pitch	Castleisland AFC	€91,765.87
52.	Castleisland Chamber Alliance - Christmas Light Project	Castleisland Chamber Alliance	€30,009.11
53.	Castleisland Chamber Alliance - Ivy Leaf Arts Theatre	Castleisland Chamber Alliance	€5,256.00
54.	Castleisland Pitch and Putt - Ride on Lawnmower	Castleisland Pitch and Putt	€2,775.00
55.	Castleisland Racing Festival Ltd - Castleisland Summer Festival	Castleisland Racing Festival Ltd	€5,917.27
56.	Castleisland Tidy Towns - Purchase of Power Waterer and Indoor Water Unit	Castleisland Tidy Towns	€2,080.46
57.	CCD Dingles Global Rhythm Festival - Marketing/Marquee Hire/PA/Sound System Hire	Cuise Chorca Dhuibhne -Dingle's Global Rhythm Festival	€2,515.00
58.	CFCD - Feasibility Study for Developing an ICW Strategy Ballydavid	Comharchumann Forbartha Chorca Dhuibhne	€28,793.16
59.	CFCD - Feasibility Study for Developing an ICW Strategy Ballyferrier	Comharchumann Forbartha Chorca Dhuibhne	€21,605.76
60.	Chris Barrett - Fox in a Box Design	Chris Barrett	€1,574.98
61.	Co Kerry Web Portal	NEWKD	€13,500.00
62.	Coiste Halla Lios Poil - Feasibility Study on Development of Community Centre/Hall in Liospole	Coiste Halla Lios Poil	€12,675.15
63.	Comharchumann Forbartha an Leith Triúigh Teo - Feasibility Study	Comharchumann Forbartha an Leith Triúigh	€15,985.08
64.	Comhaltas Ceoltóirí Éireann - Acoustic Panels to Walls in Theatre Area	Comhaltas Ceoltóirí Éireann, Coiste Co. Chiarraí	€6,489.69
65.	Comharchumann Dhún Chaoin Teo - The Elimination of Japanese Knotweed from Dun Chaoin Parish Phase 2	Comharchumann Dhún Chaoin Teo	€8,938.12
66.	Comharchumann Dhun Chaoin Teoranta - Eradication Japanese Knotweed	Comharchumann Dhún Chaoin Teo	€26,309.70
67.	Comharchumann Forbartha an Leith Triúigh - Cloghane Brandon Tidy Towns	Comharchumann Forbartha an Leith Triúigh	€1,500.00
68.	Community Walking Track	Ballymacelligott GAA Club	€18,275.55
69.	Cór agus Ceolfhoireann Nua-Cheoil an Daingin - Féile Cheoil an tSamhraidh	Cór agus Ceolfhoireann Nua-Cheoil an Daingin	€12,153.33
70.	Cór agus Ceolfhoireann Nua-Cheoil an Daingin - Feile Cheoil an tSamhraidh	Cór agus Ceolfhoireann Nua-Cheoil an Daingin	€24,130.00
71.	Crotta O'Neills - Astro Ball Wall Lighting	Crotta O'Neills Hurling Club	€13,721.25
72.	Crotta O'Neills Community Walkway	Crotta O'Neills Hurling Club	€25,228.98
73.	CTAC - New Zealand Pygmy Weed Eradication	Castlegregory Trout Angling Club (CTAC)	€21,540.37
74.	Cumann Peile na Gaeltachta - Community Gym and Walking Track	Cumann Peile na Gaeltachta	€94,038.60
75.	Cunnigaroe Ltd - Cunnigaroe Pet Farm	Cunnigaroe Ltd	€22,020.20
76.	Cunnigaroe Ltd - Sensory and Nature Play Area at Sandy Feet Farm	Cunnigaroe Ltd	€11,679.24
77.	David Geaney - Velocity - The Rising	David Geaney	€31,438.00
78.	Development of All Weather Pitch	Firies Sports Facility CLG	€93,583.22

79.	Digital Reconstruction of Castleisland Castle and editing of the Film for Tourism purposes	Robert McGuire	€2,512.50
80.	Dingle Bay Rovers All Weather Pitch	Dingle Bay Rovers	€148,968.75
81.	Dingle Corca Dhuibhne Timeline Committee - History Timeline	Dingle Corca Dhuibhne Timeline Committee	€4,289.25
82.	Dingle Peninsula Tourism Alliance-Dingle Peninsula Community Tourism Marketing Action Plan 2020-2022	Dingle Peninsula Tourism Alliance	€31,649.22
83.	Dingle Rowing Club - Naomhóg Experience & Further Development of Club	Dingle Rowing Club/Cumann Ramhiochta ChDh	€17,517.25
84.	Dingle Sleah Head Tours - Dingle Sleah Head Tour Video Production	Rory Brosnan	€12,160.50
85.	Dingle Way Upgrading, Maintenance & Marketing	Dingle Way Committee	€15,702.55
86.	Dingle's Global Rhythm Festival - Training	Cuisle Chorca Dhuibhne - Dingle's Global Rhythm Festival	€2,000.00
87.	Door Supervisor and Security Guard Training to International Protection Applicants	NEWKD	€10,000.00
88.	Duagh Sports and Leisure - Improved Access to the Multi purpose Centre	Duagh Sports and Leisure Complex Ltd	€36,764.25
89.	Duagh Sports and Leisure Complex Ltd - Installation of a Fire Escape	Duagh Sports and Leisure Complex Ltd	€9,750.00
90.	Eamonn Mulvihill - Neverland Originals Themed Installations	Eamonn Mulvihill	€25,975.80
91.	Enhancement and strengthen digital infrastructure of the Theatre	St Johns Listowel Square Company Ltd	€13,930.12
92.	EPR Plant Hire & Construction - Trenchless Eco Drainage Plough	EPR Plant Hire & Construction Ltd	€12,347.55
93.	EURI - Ballybunion Community Forum - Ballybunion Performing Arts Workshops	Ballybunion Community Forum CLG	€10,000.00
94.	EURI - Barista and Customer Service Skills Training Programme for Migrants	NEWKD	€30,000.00
95.	EURI - Capacity and Skills Development Training Programme for the Corca Dhuibhne Food Network	NEWKD	€24,850.00
96.	EURI - Castleisland Viewing Area - Glounsharoon Viewing Area	Castleisland Chamber Alliance	€54,831.46
97.	EURI - Cordal Community Internet Connection Hub	Cordal Community Resource Centre & Sports Hall	€4,105.52
98.	EURI - Feasibility Study for a Dingle Wool Social Enterprise Project	NEWKD	€4,410.00
99.	EURI - Feasibility Study for Spiritual Tourism Trails and Experiences	NEWKD	€13,394.70
100.	EURI - Lixnaw Hurling Club - Promote Physical Literacy within the Community	Lixnaw GAA/ Lixnaw Hurling Club	€79,936.00
101.	EURI - NEWKD - Feasibility Study on Upgrading and Extending North Kerry Way	NEWKD	€16,605.00
102.	EURI - NEWKD - Green Transition Training Programme	NEWKD	€24,900.00
103.	EURI - Waterworld Aquaventures Ltd - Purchase of Equipment	Waterworld Aquaventures Ltd	€37,463.88
104.	EURI-NEWKD Assessment re Pontoon on River Feale	NEWKD	€4,317.30
105.	Farranfore Development Ass - Farranfore Railway Park - Transport Heritage Storyboards and Signage	Farranfore Development Association	€4,354.20
106.	Farranfore Development Ass - Farranfore Transport History & Amenity Park	Farranfore Development Association	€83,880.47
107.	Feasibility Study on Outdoor Adventure Tourism Attraction	Eugene Finn	€8,625.00
108.	Feasibility Study on proposed Redevelopment of the Shannon Ballroom	Causeway & District Resource, Daycare Recreational & Social CLG	€12,675.15
109.	Feile Lios Tuathail - Marketing of Acting Irish International Theatre Festival 2019	Féile Lios Tuathail T/A Listowel Acting Irish Festival Committee	€4,710.30
110.	Fenit Development Association - Samphire Centre	Fenit Development Association	€16,494.30
111.	Fenit Development Association - Wild Mind Festival	Fenit Development Association	€7,943.67
112.	Fenit Fruit and Veg Ltd - Parkers Fresh Produce	Fenit Fruit and Veg Ltd	€200,000.00
113.	Firies Business Hub DAC - The Kerry Food Hub Construction of Block B	Firies Business Hub DAC	€148,674.77
114.	Firies GAA Club - Floor Refurbishment in Firies GAA Club Sports Hall	Firies GAA Club	€5,925.00
115.	Firies Tidy Towns - Purchase of Lawn Mower	Firies Tidy Towns	€4,312.50
116.	First Stop Food Sales Ltd - Production Machinery for Food Service	First Stop Food Sales Ltd	€39,592.18
117.	Gairdín Ceadfaí agus Bitheagsúlachta Chorca Dhuibhne	Comhairle na dTuismitheoirí Pobalscoil Chorca Dhuibhne	€21,650.37
118.	Green and Gold Composting Ltd - Feasibility Study for Public Recycling and Skip Hire	Green and Gold Composting Ltd	€6,750.00
119.	Greenway Destination Development Training Programme	NEWKD	€37,650.00
120.	Handed Down Sliabh Luachra Lecture Series April 2020 to April 2021	World Fiddle Day Scartaglin Community Group	€5,486.62

121.	Harty Nutrition Ltd Manufacturing Plant Scale Up	Harty Nutrition Ltd	€120,050.00
122.	Harty Nutrition Ltd - Packing Machine	Harty Nutrition Ltd	€15,250.00
123.	Irin Tech Ltd - Marketing of Smart Solution Technologies for use in Rural Area Development	Irin Tech Ltd	€16,536.20
124.	Irin Tech-Testing Programme and Marketing of Smart Solution Technologies for use in Rural Area Dev	Irin Tech Ltd	€18,896.39
125.	James O'Donoghue - CNC machine for polishing Granite, Marble and Quartz	James O'Donoghue	€43,000.00
126.	Jessica Clinton - Ballyhar Foods Purchasing of Equipment	Jessica Clinton & Michael Lenihan	€44,646.00
127.	John Cashell - "A Day in the Bog" - Bog Village	John Cashell	€11,808.00
128.	John Wade - 365 Disabled Holidays Ireland	John Wade	€9,842.78
129.	Juli Malone - Feasibility Study Dingle Druid Experience	Juli Malone	€5,313.60
130.	Kerry County Board GAA - Kerry Superheroes Programme	Kerry County Board GAA	€9,950.00
131.	Kerry County Board of Comhaltas Ceoltóirí Éireann - Fit out of Performance Space at Dromthacker	Comhaltas Ceoltóirí Éireann, Coiste Co. Chiarrai	€45,738.63
132.	Kerry Crafted Glass - Equipment for Glass Blowing Project	Kerry Crafted Glass	€3,011.25
133.	Kerry Cultural & Literary Centre CLG - Painting and Signage	Kerry Cultural & Literary Centre Clg - T/A Seanchai - Kerry Writers Museum	€8,253.75
134.	Kerry Cultural & Literary Centre Clg - Upgrading Audio-Visual Equipment/Display Case	Kerry Cultural & Literary Centre Clg - T/A Seanchai - Kerry Writers Museum	€19,027.50
135.	Kerry Respite Care - Staff Training Programme	Kerry Respite Care CLG	€4,200.00
136.	Kerry Respite Care - Strategic Plan	Kerry Respite Care CLG	€3,011.04
137.	Kerry Respite Care Ltd - ICT and Telephone Equipment	Kerry Respite Care CLG	€4,845.42
138.	Kerry Sustainable Energy Co-operative Society Ltd - Operation Kerry Renewable Energy Transformation	Kerry Sustainable Energy Co-operative	€23,573.00
139.	Kerry Tourism Industry Federation - Marketing Plan for Kerry Tourism	Kerry Tourism Industry Federation	€24,910.87
140.	Kevin O'Shea - Celtic Nature Walking Tours	Kevin O'Shea	€2,130.00
141.	Kielduff Community Centre Refurbishments	Kielduff Community Co-Op Society T/A Kielduff Community Centre	€15,118.50
142.	Kieran Burke - Step into Liquid	Kieran Burke	€22,251.00
143.	Kilcummin GAA - Walkway and Track Lights	Kilcummin GAA	€25,701.87
144.	Kilcummin Looking Good - Kilcummin Village Community Plan	Kilcummin Looking Good	€10,405.80
145.	Knocknagoshel Community Centre Committee Ltd - Extension and renovation work of Knocknagoshel Commun	Knocknagoshel Community Centre Committee Ltd	€51,375.67
146.	Knocknagoshel Community Centre Committee Ltd - Refurbishments	Knocknagoshel Community Centre Committee Ltd	€20,599.44
147.	Knocknagoshel Sports and Recreational Assoc Ltd - Log Cabin	Knocknagoshel Sports and Recreational Association Ltd	€10,875.00
148.	Laharn and District Residents Association - The Forge at Forge Cross	Laharn & District Residents Association (LaDRA)	€2,400.00
149.	Lartigue Monorail & Museum Committee - Fencing around the Car Park and Train	The Lartigue Monorail Restoration Ltd	€3,285.00
150.	Liam Poff - Road Safety App	Liam Poff	€14,385.01
151.	Listowel Community Centre CLG Recreation and Sports Facilities at Listowel Community Centre Upgrade	Listowel Community Centre CLG	€63,342.17
152.	Listowel Writers Week Literary Festival	Writer's Week Company Limited by Guarantee	€3,029.00
153.	Local Link Kerry - Purchase of IT Hardware	Kerry Community Transport CLG / T/A Local Link Kerry	€6,346.03
154.	Lyreacrompane Community Development CLG - Solar Panels and Heat Pump	Lyreacrompane Community Development CLG	€33,539.25
155.	Lyreacrompane Community Development GCL - Protection of Riverside Walk of the River Smearlagh	Lyreacrompane Community Development CLG	€9,480.16
156.	Maeve Lyons - Marine Health and Wellness Initiative	Maeve Lyons	€7,084.80
157.	Maharees Conservation Association Clg - Maharees School Redevelopment - Feasibility Study	Maharees Conservation Association CLG	€7,749.00
158.	Mary-Thea Brosnan - Purchase of Equipment for Kerry Kefir	Mary-Thea Brosnan	€14,517.83
159.	Mauras Cottage Flowers - Propagation/Self Sufficiency	Mauras Cottage Flowers	€9,591.32



160.	Mauras Cottage Flowers - Wildflower Eco Project	Mauras Cottage Flowers	€3,657.50
161.	McCarthy Engine Reconditioning - Purchase of Serdi 4.5 Seat and Guide Cutting Machine	McCarthy Engine Reconditioning	€52,391.25
162.	Michael O Donohoe Memorial Heritage Project	Michael O'Donohoe Project Committee	€9,006.66
163.	Michael Sheeran - Blasket Islands Eco Marine Tours	Michael Sheeran	€27,500.00
164.	Moyvane Community Sports Hall Ltd - Car Park Upgrade	Moyvane Community Sports Hall Ltd	€41,696.25
165.	Moyvane Community Sports Hall Ltd - Upgrading of Hall and Lights	Moyvane Community Sports Hall Ltd	€20,430.00
166.	Moyvane Development Association - Moyvane Community - Analysis and Development Plan	Moyvane Development Association	€11,160.00
167.	Natural Future of Cosmetics - Irish-Finnish collaboration project (Nacos)	NEWKD	€89,881.00
168.	NEWKD - Addiction Recovery Training Programme	NEWKD	€11,400.00
169.	NEWKD - Artisan Food Producers Training Programme for Selling Online to the Hospitality Industry	NEWKD	€188,212.50
170.	NEWKD - Atlas House Asylum Seeker and Refugee Support Programme	NEWKD	€44,895.62
171.	NEWKD - Atlas House Asylum Seeker and Refugee Support Programme	NEWKD	€44,870.33
172.	NEWKD - Biodiversity Training Programme	NEWKD	€74,800.00
173.	NEWKD - Cyber Security Training	NEWKD	€24,900.00
174.	NEWKD - Dingle Peninsula Socio Economic Profile	NEWKD	€22,455.00
175.	NEWKD - Feasibility Study on Blueways	NEWKD	€5,258.25
176.	NEWKD - Healthy Relating Programme	NEWKD	€66,375.00
177.	NEWKD - Incredible Years Training Programme	NEWKD	€32,050.00
178.	NEWKD - New Communities Social Enterprise Feasibility Study	NEWKD	€7,527.60
179.	NEWKD - New Communities Volunteer Advocacy Programme	NEWKD	€11,021.93
180.	NEWKD - Online Walks Map and Brochures	NEWKD	€21,678.75
181.	NEWKD - Social Enterprise Training Programme	NEWKD	€39,834.00
182.	NEWKD - Traveller Social Enterprise Initiative	NEWKD	€8,302.00
183.	NEWKD - Walking Trails Map - Tourism Content project	NEWKD	€8,763.75
184.	NEWKD Addiction Recovery Personal Development Programme	NEWKD	€6,480.00
185.	NEWKD Cúinne an Ghiorria - The Hare's Nook	NEWKD	€21,000.00
186.	NEWKD Training Programme in "Developing a Sustainable Regional Food Branding Strategy"	NEWKD	€122,054.50
187.	North Kerry/West Limerick Periphery and Border Areas Initiative (Analysis)	NEWKD	€28,183.36
188.	North Kerry/West Limerick Periphery and Border Areas Initiative (Training)	NEWKD	€49,155.50
189.	Padraig Hayes T/a Tralee Equestrian Centre - Upgrade of Existing Facilities	Padraig Hayes T/a Tralee Equestrian Centre	€4,871.41
190.	Padraig Hayes T/A Tralee Equestrian Centre - Upgrading of Facilities	Padraig Hayes T/a Tralee Equestrian Centre	€4,941.87
191.	Patricia Griffin - An Tigh Beag Cottage & Woodland	Patricia Griffin	€15,863.32
192.	Patrick Browne - Tralee Brandon Bay Eco Tours	Patrick Browne	€38,666.38
193.	Patrick O'Keeffe Traditional Music Festival	Patrick O'Keeffe Traditional Music Festival	€9,554.13
194.	Patrick O'Keeffe Traditional Music Festival - Marketing	Patrick O'Keeffe Traditional Music Festival	€7,398.72
195.	Paudie and Mary Hanafin - Ballygarron Farm	Paudie and Mary Hanafin	€18,836.85
196.	Philip Stallard New Wave Adventure Therapy	Philip Stallard	€13,145.00
197.	Prestige Foods - Desserts and Savoury Automation Project	Prestige Foods Limited	€47,508.00
198.	Prestige Foods Ltd - All and More Desert Manufacture	Prestige Foods Limited	€134,365.50
199.	Prestige Foods Ltd - Sleeve & Tub Printers	Prestige Foods Limited	€21,079.00
200.	Purchase of ICT Equipment including Laptops and Headsets	NEWKD	€4,212.00
201.	Rahoonane Community Centre - Feasibility Study	Rahoonane Community Centre	€4,500.00
202.	Rathea Irremore Community Group - Upgrade Car Park and Gym Equipment	Rathea Irremore Community Group	€21,012.56
203.	Recalibration Limited - Great Southern Greenway Bike Hire & Cycle Tours	Recalibration Limited	€23,295.45

204.	Recalibration Limited - New Business Start Up Costs	Recalibration Limited	€7,307.24
205.	Renovation of Infrastructure - Historic Visitor Centre	Tarbert Bridewell Ltd	€8,725.50
206.	River Feale Catchment Management Animation Project	NEWKD	€9,711.90
207.	Rivergrove Retail Ltd - Feasibility Study	Rivergrove Retail Ltd	€4,275.00
208.	Robert McGuire - The History of the Castle of the Island	Robert McGuire	€11,925.00
209.	Rustic Boowa Polish Artisan Bakery	Ilona Koscielniak	€28,604.48
210.	Sean McCarthy Community Group - Construction of Storage Space	Sean McCarthy Memorial Weekend	€5,235.00
211.	Sean McCarthy Community Group - Renovation work at the Thatchand and Purchase of Chairs	Sean McCarthy Memorial Weekend	€4,918.44
212.	Sean McCarthy Memorial Weekend - Village Renewal	Sean McCarthy Memorial Weekend	€2,128.12
213.	Seanchai KCLC-The Development of a Marketing Strategy, Marketing and Promotion of Seanchai	Kerry Cultural & Literary Centre Clg - T/A Seanchai - Kerry Writers Museum	€11,250.00
214.	Sliabh Luachra Boxing Club - Refurbishment of Boxing Club	Sliabh Luachra Boxing Club	€10,792.32
215.	Smart Villages Training Delivery	NEWKD	€23,918.85
216.	Spa Fenit Community Council - Churchill Forge	Spa Fenit Community Council	€40,000.00
217.	Spa Fenit Community Council - Churchill Forge Display Panels	Spa Fenit Community Council	€12,422.25
218.	St Johns Listowel Square Company Ltd - Stained Glass Windows, Clock faces and Fire Extinguisher	St Johns Listowel Square Company Ltd	€17,716.68
219.	St John's Parish - Curaheen Community Room Extension	St John's Parish	€43,515.90
220.	Tarbert Bridewell Ltd - Development of Infrastructure - Installation of a Digital Media System	Tarbert Bridewell Ltd	€7,300.49
221.	Tarbert Development Association - Signage at John F Leslie Woodland Walk	Tarbert Development Association	€3,890.70
222.	Tarbert Development Association - Upgrading of the ground of the Memorial Plaza	Tarbert Development Association	€6,063.00
223.	Teach Cultuir Scartaglin - Enhancement of Sliabh Luachra Cultural and Heritage Centre	Teach Cultuir Scartaglin CLG	€10,569.08
224.	The Golf Doc Academy	The Golf Doc Pro Ltd	€72,710.22
225.	The Little Dingle Film Festival CLG - The International Dingle Film Festival	The Little Dingle Film Festival CLG	€39,138.48
226.	The Shannon-Erne Pilgrim Way Baseline Study	NEWKD	€5,537.39
227.	The Spa Tidy Village Group - 5 Year Village Plan	The Spa Tidy Village Group	€4,900.50
228.	Thomas O'Sullivan - Marketing and Branding of O'Sullivan's Honey	Tom O'Sullivan	€6,170.11
229.	Tim & Kathleen Regan - Killarney Bee Walks	Tim & Kathleen Regan	€12,007.62
230.	Tom O'Sullivan - Heather Honey Processing	Tom O'Sullivan	€3,455.35
231.	Tralee and Ballymacelligott Select Vestry - Tourism Project St John's Church Ashe Street	Tralee and Ballymac Select Vestry	€18,840.53
232.	Tralee Bay Heritage Association - Biodiversity and Heritage Awareness Training	Tralee Bay Heritage Association	€8,850.00
233.	Tralee Bay Maritime Centre Ltd - Equipment for Marine Related Training	Tralee Bay Maritime Centre Ltd	€40,864.94
234.	Tralee Chamber Alliance - Outdoor Adventure Park Feasibility Study	Tralee Chamber of Tourism Commerce & Industry CLG	€4,428.00
235.	Tralee Chamber of Tourism - Chinese New Year Festival and Chinese Community Event	Tralee Chamber of Tourism Commerce & Industry CLG	€18,750.00
236.	Tralee Chamber of Tourism Commerce and Industry - Tralee Economic Tourism Strategy	Tralee Chamber of Tourism Commerce & Industry CLG	€10,608.75
237.	Tralee Harriers Athletics Club - Tartan Surface for Athletics and Casual Running Groups	Tralee Harriers Athletics Club	€37,455.00
238.	Tralee Regional Sports & Leisure Co - Upgrade of Sports Hall Floor & Replacement of Bleacher Seating	Tralee Regional Sports and Leisure Company Limited by Guarantee	€116,793.52
239.	Tralee Rowing Club - Community Accessible Pontoon	Tralee Rowing Club	€32,497.05
240.	Tralee Skatepark Community Group - Tralee Skatepark	Tralee Skatepark Community Group	€52,498.76
241.	Tralee Waterworld Plc - Special Needs Changing Area	Tralee Waterworld PLC	€5,000.00
242.	Trants Farm Ltd- Rookfarm Dairn Milk Processing	Trants Farm Ltd	€9,750.00
243.	West Kerry Agricultural Show	West Kerry Agricultural Show	€4,637.00
244.	Writers Week - Computer Upgrades and Marketing Pop Ups	Writer's Week Company Limited by Guarantee	€3,566.37
			<b>€6,512,371.18</b>

## APPENDIX 2 | NEWKD STAFF, PROGRAMME & UNIT DETAILS

PROGRAMME	JOB ROLE	NAME	AREA	TEL.	EMAIL
	Chief Executive Officer	Eamonn O'Reilly	All NEWKD area	066 7180190	eamonnoreilly@newkd.ie
	Financial Administrator	Sheila Evans	All NEWKD area	066 7180190	sheilaevans@newkd.ie
	Human Resource Manager	Sean O'Connell	All NEWKD area	066 7180190	seanconnell@newkd.ie
	Operations Manager	Patricia Dowling	All NEWKD area	066 7180190	trishadowling@newkd.ie
	Community Engagement Manager	Daniel O'Shea	All NEWKD area	066 7180190	danieloshea@newkd.ie
Rural Development Programme	Manager	Sean Linnane	All NEWKD area	066 7142576	seanlinnane@newkd.ie
	Officer	Mary Stack	Listowel	068 23429	marystack@newkd.ie
	Officer	John Loughrey	Tralee/Dingle	066 7180190	johnloughrey@newkd.ie
Rural Walks Programme	Rural Recreation Officer	Joanna Jankowska	All NEWKD area	066 7180190	joannajankowska@newkd.ie
Tus Community Work Programme	Co-ordinating Supervisor	Michael Crean	All NEWKD area	066 7180190	mikecrean@newkd.ie
	Supervisor	Tina Moriarty	Tralee	066 7180190	tinamoriarty@newkd.ie
	Supervisor	Helena Houlihan	Listowel	068 23429	helenahoulihan@newkd.ie
	Supervisor	Emma Edwards	Castleisland	066 7142576	emmaedwards@newkd.ie
	Supervisor	Steve Moore	Tralee	066 7180190	stevemoore@newkd.ie
Rural Social Scheme	Supervisor	Aine Stack	Tralee	066 7180190	ainestack@newkd.ie
	Supervisor	Geraldine Kelly	Listowel	068 23429	geraldinekelly@newkd.ie
	Supervisor	Anita Bodenham	Listowel	068 23429	anitabodenham@newkd.ie
	Supervisor	Joanne O'Sullivan	Castleisland	066 7142576	joannesullivan@newkd.ie
	Supervisor	Kay Daly	Castleisland	066 7142576	kayoconnor@newkd.ie
Senior Alert Scheme	Administrator	Helen Canty	Listowel	068 23429	receptionlistowel@newkd.ie
Community Employment Tralee	CE Supervisor	Claire O'Mahony	Tralee	066 7180190	claireomahony@newkd.ie
Team Community Employment	CE Supervisor	Nola Hellstrom	Tralee	066 7180190	nolahellstrom@newkd.ie
	CE Supervisor	Joanne Reilly	Tralee	066 7180190	joannereilly@newkd.ie
Older Persons Home Maintenance Community Services Programme	Home Maintenance Manager	Diana McCarthy	Listowel	068 23429	dianamccarthy@newkd.ie
Revamp Furniture Upcycling Community Services Programme	Revamp Manager	Marie Keane	Castleisland	066 7142576	mariekeane@newkd.ie
Home Visitation Service and Sustainable Energy Communities	Co-ordinator	Ed O'Connor	All NEWKD area	068 23429	edoconnor@newkd.ie
Social Enterprise for Migrant Integration	Development Worker	Pat O'Donovan	Tralee	066 7180190	patodonovan@newkd.ie
	Development Worker	Magdalena Krupka	Tralee	066 7180190	magdalenakrupka@newkd.ie
Kerry Local Area Employment Service	Manager	Elaine McKenna	All NEWKD area	068 23429	elainemckenna@newkd.ie
Rural Food Skillnet	Manager	John Moriarty	Tralee	066 7180190	info@ruralfoodskillnet.com



PROGRAMME	JOB ROLE	NAME	AREA	TEL.	EMAIL
Social inclusion and Community Activation Programme	Manager	Robert Carey	All NEWKD area	068 23429	robertcarey@newkd.ie
	Estate Management/ Social Enterprise Office	Dave Fitzgibbon	Listowel	068 23429	davefitzgibbon@newkd.ie
	Community Development Worker	Pamela Dillane	Tralee	066 7180190	pameladillane@newkd.ie
	Equality/Employment Officer	Dee Keogh	Listowel	068 23429	deekeogh@newkd.ie
	Youth Projects & Employment for Under 25s	Jennifer O'Sullivan Coffey	Castleisland	066 7142576	jenniferosullivan@newkd.ie
		Louise Lyons	Listowel	068 23429	louiselyons@newkd.ie
	Enterprise Officer	Eibhlis Hanrahan	Listowel/Tralee	068 23429	eibhlisahanrahan@newkd.ie
	Community Development Worker	Ger Brosnan	Rahoonane	066 7185248	gerbrosnan@newkd.ie
	Social Enterprise Officer	Elaine Kennedy	Castleisland	066 7142576	elainekennedy@newkd.ie
	Community Development Worker	Zaid Kassoob	Tralee	066 7180190	zaidkassoob@newkd.ie
	Community Development Worker	Natalia Krasnenkova	Dingle	066 1742788	nataliakrasnenkova@newkd.ie
	Community Development Worker	Magda Krupka	Tralee	066 7180190	magdalenakrupka@newkd.ie
	Community Development Worker	Olha Maryntseva	Tralee	066 7180190	olyamaryntseva@newkd.ie
	Community Development Worker	Oksana Tabalyuk	Tralee	066 7142788	oksanatabalyuk@newkd.ie
Tralee Sports Hub	Co-ordinator	Ray Lally	Tralee	066 7180190	sportshub@newkd.ie
Kingdom Trust Fund	Family/Education Supports	Pamela Dillane	Tralee	066 7180190	pameladillane@newkd.ie
Social Farming Programme	Development Officer	Rena Blake	All NEWKD area	068 23429	renablake@newkd.ie
Rahonnane Community Centre	Centre Administrator	Mary Cahill	Tralee	066 7185248	marycahill@newkd.ie



**TRALEE** *(Registered Office)*

Áras an Phobail, Croílár na Mistéalach,  
Dean's Lane, Tralee / Trá Lí V92 CRW8  
T : 066 718 0190

**CASTLEISLAND**

44 Main Street,  
Castleisland / Oileán Chiarraí V92 DT96  
T : 066 714 2576

**LISTOWEL**

20 Upper William Street,  
Listowel / Lios Tuathail V31 TR68  
T : 068 23429

**DINGLE**

Cooleen Business Park,  
An Cuilin, Dingle / An Daingean V92 Y23W  
T : 066 714 2788

INCORPORATING

**TEAM CE/NEWKD**

Foireann House, Unit 1  
O'Connor Centre, Brandon House  
Upper Rock Street, Tralee V92 DN22  
T : 066 718 0190 Ext. 149

CRO 454570 | Charity Number CHY 18448  
Registered Charity No. 20070717

[info@newkd.ie](mailto:info@newkd.ie) | [www.newkd.ie](http://www.newkd.ie)



Rialtas na hÉireann  
Government of Ireland



EUROPEAN UNION  
Investing in your future  
European Social Fund



The European Agricultural Fund  
for Rural Development: Europe  
investing in rural areas



Coiste Forbartha Pobail  
Áitiúil Chiarraí  
Kerry Local Community  
Development Committee

