



John Stack

Chairperson, NEWKD

It gives me great pleasure to announce the launch of the Community Vibrancy Recognition Programme. This programme is the result of a partnership between NEWKD and Kerry Group. We are delighted to be in a position, with Kerry Group, to recognise the valuable development projects that both local communities and our NEWKD personnel undertake together.

The support of Kerry Group will ensure NEWKD can continue a proud tradition of local delivery of local services at:

TRALEE: Áras an Phobal, Deans Lane (*as part of the Mitchels Regeneration*)
and Local Employment Services, North Circular Rd.

LISTOWEL: 20 Upper William St. (*former Post Office*)

CASTLEISLAND: Cragreens
(*between An Ríocht and the Castleisland Mart*)

DINGLE: An Cuilín (*Interagency Business Park*)

Frank Hayes

Director of Corporate Affairs, Kerry Group

Kerry Group, together with NEWKD, welcome the opportunity to recognise the invaluable work that local volunteers undertake and the support they receive from the local development partnership. As a company rooted in the local community, Kerry Group is an ongoing supporter of numerous initiatives and we understand that the hard work and commitment of the people involved is often the key to a project's success.

The Community Vibrancy Recognition Programme, launched in partnership with NEWKD, will recognise the efforts of those who are helping to build stronger, more inclusive local communities

COMMUNITY VIBRANCY RECOGNITION PROGRAMME 2017-2019

NEWKD in partnership with Kerry Group are delighted to launch the Community Vibrancy Recognition Programme.

This is a three year initiative (2017-2019) aimed at recognising the diversity and vibrancy of community work throughout the area. Every year NEWKD works with over 500 community groups, businesses and initiatives under our 4 Strategic Pillars:

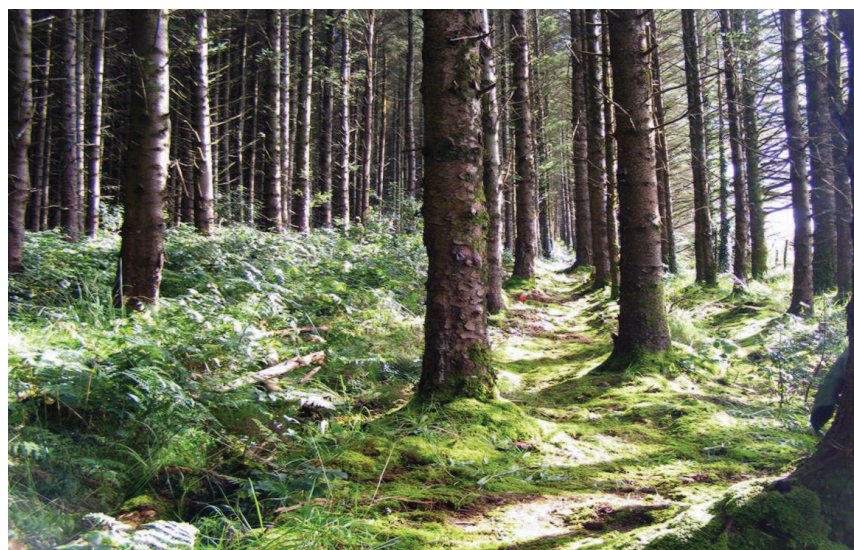
- **Social Supports**
- **Employment Services**
- **Enterprise and Rural Tourism**
- **Community, Environment and Rural Development**

The 'Community Vibrancy Recognition Programme' will pay tribute to 10 recipients each year. Each project will be selected for their uniqueness, vibrancy and responsiveness to addressing local need. Recipients will be recognised locally through the NEWKD structures which operate in Tralee, Listowel, Castleisland and Dingle, and will promote best practices and innovative solutions in social, economic and environmental development, while giving recognition to community leadership and entrepreneurs.

How the Programme will work:

1. One project will be selected per month by NEWKD
2. This project will be featured as a case study outlining the description, volunteer input, NEWKD involvement, good practice and learning
3. The project will be presented at a public and media event in the local area
4. The project case study will be distributed through media, social media and hardcopy
5. The project will be highlighted in local communities through NEWKD local area offices
6. The Programme and case studies will be promoted throughout the year at NEWKD events
7. The projects will be showcased at an Annual Celebration
8. All projects will be presented in NEWKD's Annual Report.

For further information www.newkd.ie



Glanageenty Walkways

Five miles North West of Castleisland, Co. Kerry lies the rugged and unspoilt landscape of the Glanageenty woodlands in the parish of Ballymacelligott, an area that has been described as the Sherwood Forest of Munster and has long been a place of mystery and myth.

Over the years Glanageenty has been the hiding place of many a famous fugitive. The mountainous terrain is divided by the Glanageenty River which winds its way along the valley floor. Above the river, on the hilltops, the panoramic view allows you to gaze at the McGillycuddy Reeks mountain range with the view extending from Brandon Point right across to The Pap Mountains.

In September 2008, plans were put in place to create a walkway along the peaceful and historic valley of Glanageenty. The walkway comprises of three colour coded loops; The Glanageenty Three Mile Green Loop (which featured on RTE's *Track and Trails* series and was walk of the week in *Fit* magazine); The Lenihan Four Mile Blue Loop and The Bernard Brothers Six Mile Purple Loop. The walks were launched in 2012 by the NEWKD Sliabh Luachra Walks Committee.

There is superb co-operation with a variety of agencies involved on these walks. None of this would have been possible but for the goodwill and consent of local landowners and Coillte. This project is guided by NEWKD, Kerry County Council, the National Parks and Wildlife Service, Inland Fisheries Ireland and Fáilte Ireland. Local businesses, families, groups and individuals have all helped in their own way, from sponsoring picnic benches to supplying gravel. The maintenance and upkeep of the walkway is carried out by the very talented Rural Social Scheme workforce.

These walkways provide an area of off-road walking, with detailed signage and information boards en route outlining the abundant history of the area which is particularly attractive to tourist groups. Many tourists staying locally avail of this tranquil area in the evening. Sporting clubs and schools also avail of the facility. Information on the walkway is widely available through a variety of social media outlets including Facebook, Fáilte Ireland and National Trails Office websites.

A new 'Ballymac/Glanageenty Ramblers' Committee was formed in November 2014. It comprises of a group of dedicated hard working local volunteers. Where possible, the committee is conscious of sourcing quality local materials at the best price to ensure all works are carried out to a very high standard.

It is estimated that on average one hundred people use the walk during the week, with those numbers tripling on Sundays. Due to the increase in the number of walkers availing of this wonderful amenity, it became necessary for the committee to expand the car park.

For further information on the project please see the Glanageenty facebook page: [Facebook/glanageentywalkways](https://www.facebook.com/glanageentywalkways)



GOOD PRACTICE & LEARNING:

- Make the project attractive to the local community through involving local peoples' skills, volunteers, sponsorship, etc;
- Ensure the project is suitable to the area and landscape;
- Engage a positive, enthusiastic team and know the capabilities of each team member;
- Have someone who has the foresight to see the potential of the end project;
- Team members must be given the confidence and space to share their ideas;
- Use natural and local resources;
- Visit other similar projects for ideas and inspiration;
- Apply suggestions provided by various agencies;
- Have the patience to complete the project correctly and ensure close attention to all details.

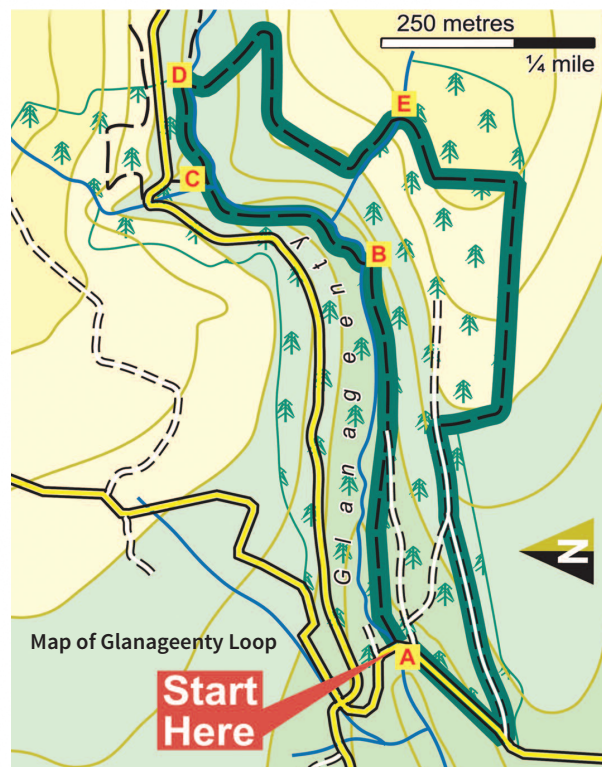
SUPPORT FROM NEWKD

1. NEWKD's **Rural Social Scheme** has been involved in the project from its inception and the participants have learned invaluable experience from the guidelines outlined by a variety of agencies involved over the years. The role of the Rural Social Scheme in developing the walkway includes:

- Clearing of vegetation to create the walkway route
- Knocking of ditches to create walkway through neighbouring properties
- Fencing of the walkway to prevent cattle gaining access to the walkway path
- Creating steps to gain access to elevated sections
- Digging of pathways across steeply cambered ground
- Creating safety barriers on steep ground
- Gravelling/surfacing of freshly dug pathways
- Digging of holes and laying of concrete for way marking poles and arrows
- Digging base and laying concrete for two 20ft steel bridges
- Placement of steps and pathways at bridges
- Preparing of sites for walking stiles at landowners boundaries
- Laying railway sleepers over wet ground
- Continuous maintenance and upkeep of all areas

2. €51,288.35 funding from NEWKD's **LEADER Rural Development Programme** for capital and marketing investment.

3. Development support through **Social Inclusion & Community Activation Programme**, for skills development, capacity building and accessing funding from various sources.



The woodland path meandering upstream



2017 - 2019

NEWKD and Kerry Group wish to acknowledge and thank all those that have contributed to the development of the

GLANAGEENTY WALKWAYS

And recognise the valuable contribution that the Walkways make to:

- The Community Vibrancy of the Area
- Rural Tourism
- Community, Environment and Rural Development

Date: April 2017

“This is an excellent example of the work of both local volunteers and NEWKD staff working together and supported by the relevant agencies.”

John Stack
Chairperson, NEWKD



“Kerry Group recognises the contribution to the wider community and local economy of such an inviting and valuable resource, developed to the highest standards.”

Frank Hayes
Director of Corporate Affairs, Kerry Group

